

# Sprouty Spud Head

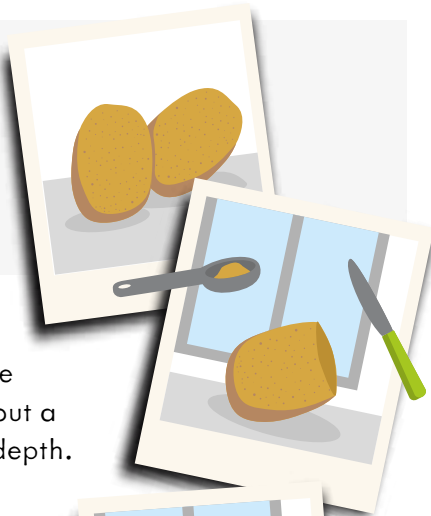
## You will need...

- One large spud
- Base support (strip of card around 25cm long x 4cm wide)
- Glue / double-sided tape
- Cotton wool ball
- Cress seeds
- Felt pens or stickers or items to decorate your Spud Head.  
(You can be as creative as you like - you may want to use lolly sticks, small twigs, scraps of fabric, etc or shape pieces of plasticine into features.)

Remember to  
post your Sprouty  
Spud Head photos  
@seasonalSpuds

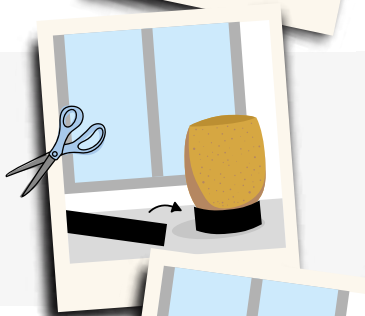


**1** Choose your spud.

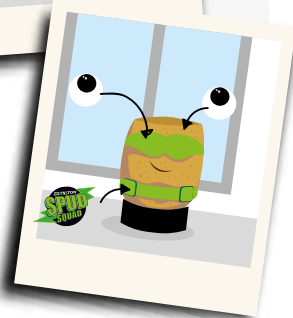


**2** (Get an adult to) cut the top off the spud and scoop out a hole to a 2-3cm depth.

**3** Fasten the support strip around the base of your spud so that it stands up.



**4** Decorate your spud, adding features - eyes, ears, arms, hair, etc.



**5** Put the cotton wool in the cavity and wet it thoroughly.



**6** Sprinkle in the cress seeds so that they are evenly spread.

**7** Place in a light place out of direct sunlight and water regularly.



**8** Your sprouty cress should be ready to harvest in a week or two. Just snip off what you need.

